

# AARCH CASTER AND EQUIPMENT

314 Axminister  
Fenton, MO 63026

636-349-0220  
Fax 636-600-4060

[www.aarchcaster.com](http://www.aarchcaster.com)

## MRI Non-Magnetic Twin Wheel Casters



- 50mm, 60mm, and 75mm wheel diameters
- 7/16" Ring stems or 3/8" threaded stems
- Soft TPR wheel

**MRI Safe!**

## Prevenz™ Antimicrobial Wheels



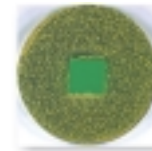
Many sizes and wheel compounds available

Helps control bacteria, molds, mildew, fungi, and odors.

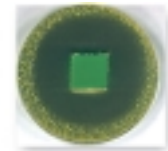
Suppresses the growth of microbes for life of the wheel!

Registered with the EPA, FDA, EU, and NSF

Bacterial Growth



Without Prevenz™



With Prevenz™

## Hospital Bed & Stretcher Casters

5" or 8"  
Stryker & Adel  
Brake, Steer, & Total Lock



## Hospital Bed Casters

5"  
Stryker & Hilrom  
Directional & Total Lock



## Stretcher Casters

8"  
Directional & Total Lock  
Stretcher Casters



## Ultrasound Machine Caster

8"  
General Electric  
Spring Loaded



## Medical Equip. Casters

2" or 3"  
Swivels with multiple fastening options, and sealed bearings

Chrome or Black Finish



## Medical Equip. Casters

4", 5" & 6"  
Glass Filled Nylon Body Casters

Excellent for Wash-Down Conditions!



## Nursing Home Bed Casters

3"  
Total Lock Bed Caster with 7/16" Spring Stem



## Service Cart Casters

5"  
Adel  
Total Lock



## Hospital Bed Casters

5" or 6"  
Hausted  
Twin Wheel  
Directional & Total Lock



### IV Poll Caster

3"  
Single Wheel  
3/8-16x1-1/2"  
Threaded Stem



### IV Poll Casters

2" & 2-1/2"  
Twin Wheel  
7/16 x 7/8"  
Ring Stem



### Shower Chair Casters

4"  
Stainless  
Steel  
With Brake

Other sizes and  
styles available



### Poly Service Carts

Heavy duty  
construction,  
capacities from  
400 lbs to 600  
lbs, washable,  
multiple sizes  
available



Easy to clean!

### Poly Tilt Trucks

Heavy duty  
construction,  
capacities from  
300 to 2300  
lbs, washable,  
multiple sizes  
available



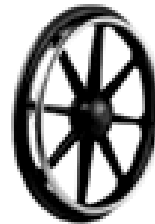
### Pallet Jacks

5500 lb. Capacity,  
poly wheels,  
1 year warantee  
21" x 48"  
or  
27" x 48"



## Wheel Chair Replacement Parts

E&J, Gendron and All Other Major Brands



Wheel  
Assemblies



Caster Wheels



Replacement  
Tires



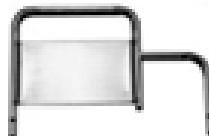
Arm Rests



Calf Pads



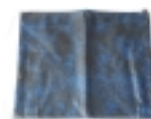
Wheel Brakes



Arm Assemblies



Leg Rest  
Assemblies



Seats



Backs



314 Axminister  
Fenton, MO 63026

636-349-0220  
Fax 636-600-4060

[www.aarchcaster.com](http://www.aarchcaster.com)

Mon. - Fri.  
7:30 AM - 4:30 PM

**Accepting:**  
American Express  
Discover  
Master Card  
Visa